



Adam J. Metcalfe, SIOR

251-432-2600 251-433-4478 - fax

adam@metcalfecco.com

Post Office Box 2903, Mobile, AL 36652

# FOR SALE

## Industrial Fabrication Facility Opp, Alabama

Location:	200 Hattaway Road Opp, AL
Size:	56,593 sf total 4,909 sf office
Year Built:	2006
Parking:	91 parking spaces
Ventilation:	High volume mechanical
Lighting:	High bay LED
Power:	1200 amp main service
Cranes:	Two craneways with (5) 5 ton & (4) 2 ton bridge cranes
Air:	High capacity air compressor with lines
Loading:	2 dock high doors 4 grade doors
Eave Heights:	27± at eave 29± at center
Other Amenities:	Fully fenced with 3 electric gates Storage shed and chemical storage building
Land Area:	22.90 acres
Purchase Price:	\$2,520,000



The information provided for by the company is subject to errors, omissions, changes, prior sale or lease and withdrawal from the market without notice by the owner. This information has been gathered from sources that are deemed to be reliable, however there is no warranty or guarantee to its accuracy or validity. You are hereby advised to independently verify the information presented herein.



**NORTH VIEW**



**LOBBY**



**OFFICE AREA**

The information provided for by the company is subject to errors, omissions, changes, prior sale or lease and withdrawal from the market without notice by the owner. This information has been gathered from sources that are deemed to be reliable, however there is no warranty or guarantee to its accuracy or validity. You are hereby advised to independently verify the information presented herein.





**SOUTH VIEW**



**DOCK HIGH LOADING**



**SHOP VIEW**



**CHEMICAL STORAGE BUILDING**

The information provided for by the company is subject to errors, omissions, changes, prior sale or lease and withdrawal from the market without notice by the owner. This information has been gathered from sources that are deemed to be reliable, however there is no warranty or guarantee to its accuracy or validity. You are hereby advised to independently verify the information presented herein.

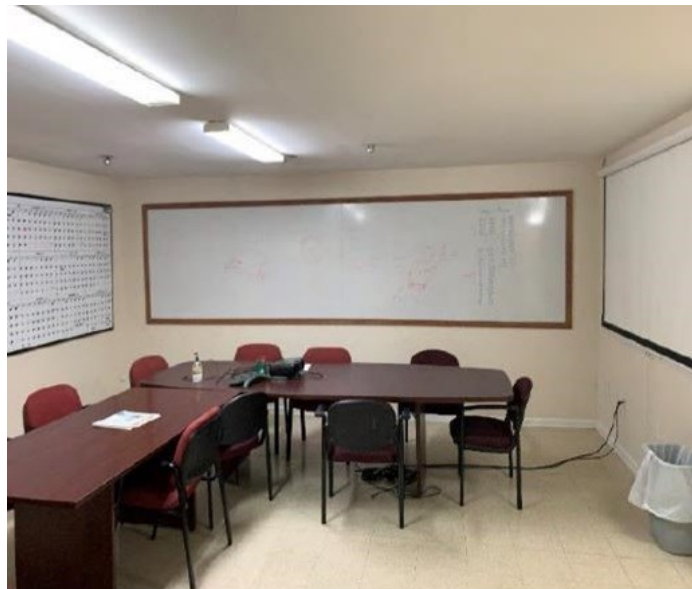




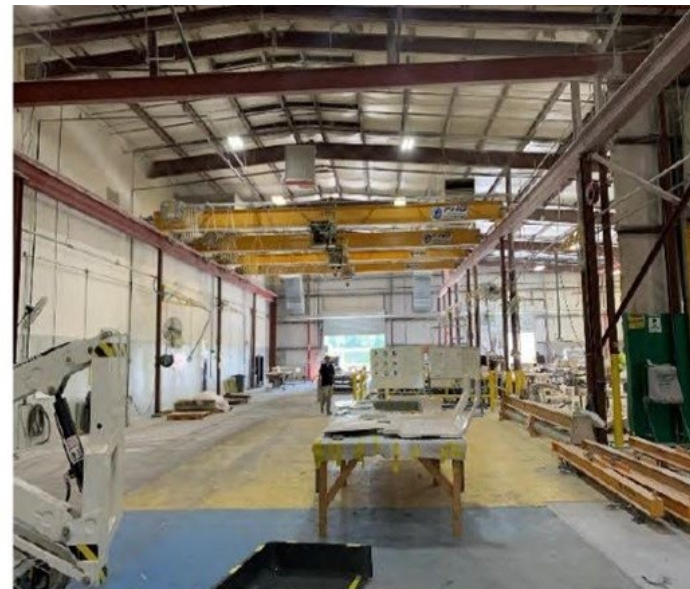
**CHEMICAL STORAGE BUILDING**



**SHED**



**CONFERENCE ROOM**



**SHOP VIEW**

The information provided for by the company is subject to errors, omissions, changes, prior sale or lease and withdrawal from the market without notice by the owner. This information has been gathered from sources that are deemed to be reliable, however there is no warranty or guarantee to its accuracy or validity. You are hereby advised to independently verify the information presented herein.